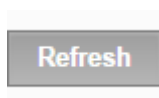


This guide helps you getting started with SaasNow within a few steps.

## Create SAS environment

1. You received an email from SaasNow where you can create your login details.
2. Log in to <https://www.saasnow.com/portal> with your login details.
3. Navigate to tab 'Manage' and click 'SaasNow' in the drop down menu.
4. Fill in your 'company tag': `hostname.mycompanytag.saasnow.com`. Please note, the company tag should contain 3 to 20 characters and/or numbers.
5. Click 'Add environment' to create your SAS-environment.
6. Fill in a 'Hostname' for your environment. We recommend you to choose a hostname that is easy to recognize, for example: `[nameserver1]`, `[nameserver2]` etc. Please note, the hostname should contain 3 to 30 characters and/or numbers.
7. Select your 'Config' and datacenter (if applicable).
8. After accepting the User Agreements and General Terms and Conditions, please click 'Save'.

Your environment will now be created. The status is 'Creating'. You can use the 'Refresh' button to refresh the page.



9. Your environment is active within one working day. The status will change to 'Active'.

Status:  Active

## Create user

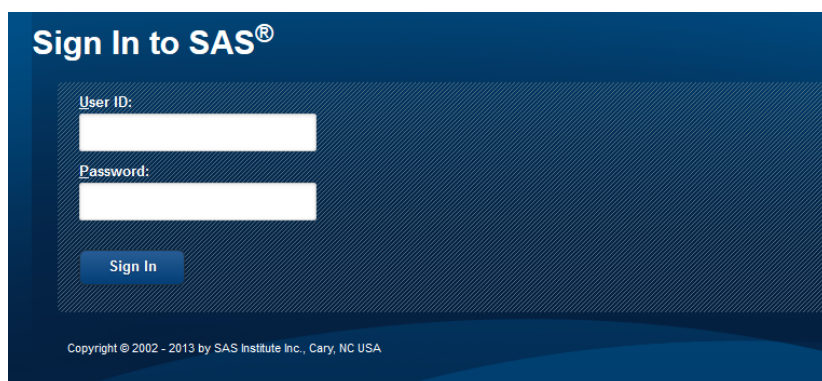
First of all, you have to create a user. A user has access to the SAS-portal. To create a user, click on 'details'.

10. Next, click the button 'Manage Users' and 'Create user'.
11. Fill in the email address, the user role and a self-chosen password. Please note, the password should contain at least 1 uppercase, 1 lowercase character, 1 special character and 1 number.
12. Click 'Save'.
13. In case you wish to create multiple users, click 'Create user' again, and repeat steps 11 and 12.
14. Hereafter, click 'Apply changes' to confirm your changes.

Multiple SAS-environments can be created by following the steps above. An overview of the created environments can be found at the overview page.

## Start application (SAS vApp)

In order to view filters and reports via 'Start application' you are required to login with the login details of the user you have created.



## View, manage and change SAS environments

Via the 'Details' button, you can view, manage and change your SAS environments. The following options are shown:



### Storage expanded / Edit

View your current storage size. You can expand your storage size via the button 'Edit'.

### Data Manager

Via this button you can easily upload the data you want to analyze.

### Restart VA

This button allows you to restart your Visual Analytics applications. This will take about 15 minutes.

### Restart VM

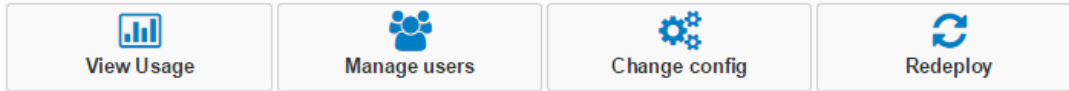
Click this button in case you wish to restart your environment. This will take about 20 minutes.

### Delete

This button allows you to delete your entire environment. Your data will be in quarantine for 30 days and free of charge, with the ability to reactivate the data. Data will be permanently deleted after 30 days without possibility of recovery.

## Apply changes

Once you have made a change, you must click 'Apply changes' to implement your changes.



### View usage

View your license, hardware and storage usage per month.

### Manage users

Create, manage or delete your uses for the SAS application.

### Change config

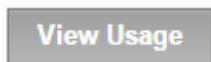
Change your configuration, such as the number of CPU's and RAM.

### Redeploy

This button allows you to recreate your environment. Note that data that is already stored in the existing environment, such as reports and filters, will be lost.

## Usage at a glance

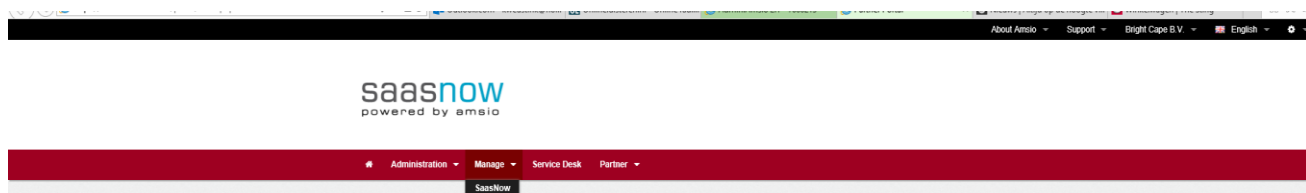
The overview page includes the button 'View usage'. Via this button you can view your historical usage per environment, even of environments that are already deleted.



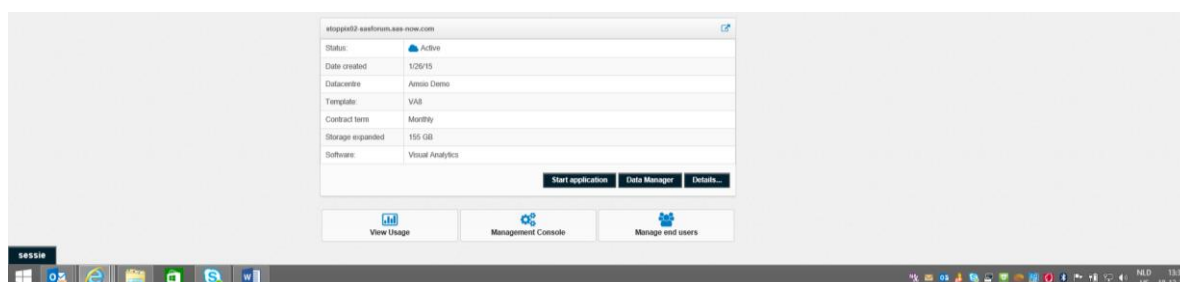
## Management Console/RDS-user (SAS vApp)

For using our Management Console, you have to take the following steps.

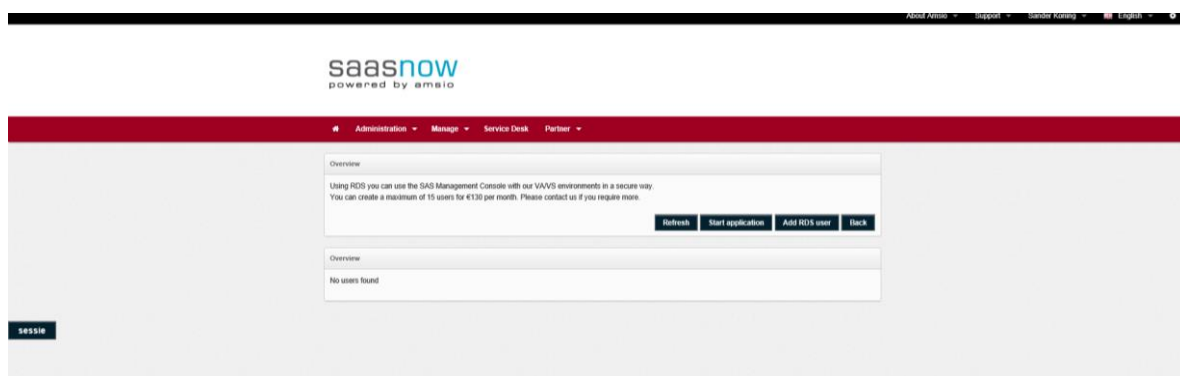
Login to our portal. Choose Manage/SaaSNow



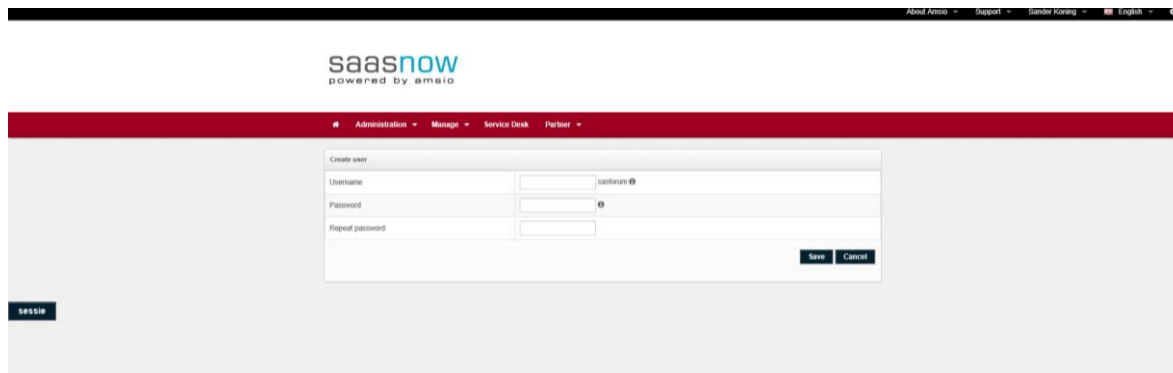
Go to Management Console



Click at Add RDS user



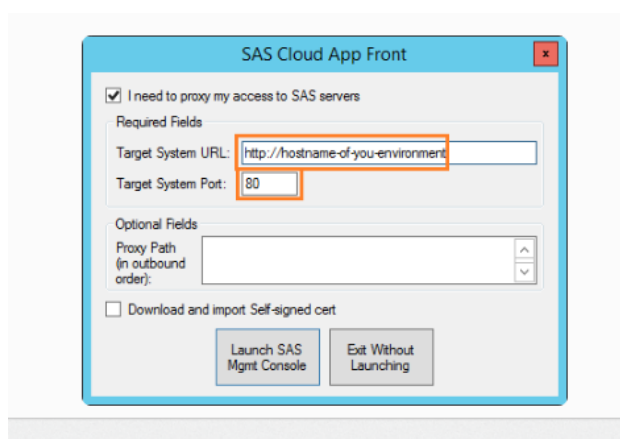
Add user and choose a password



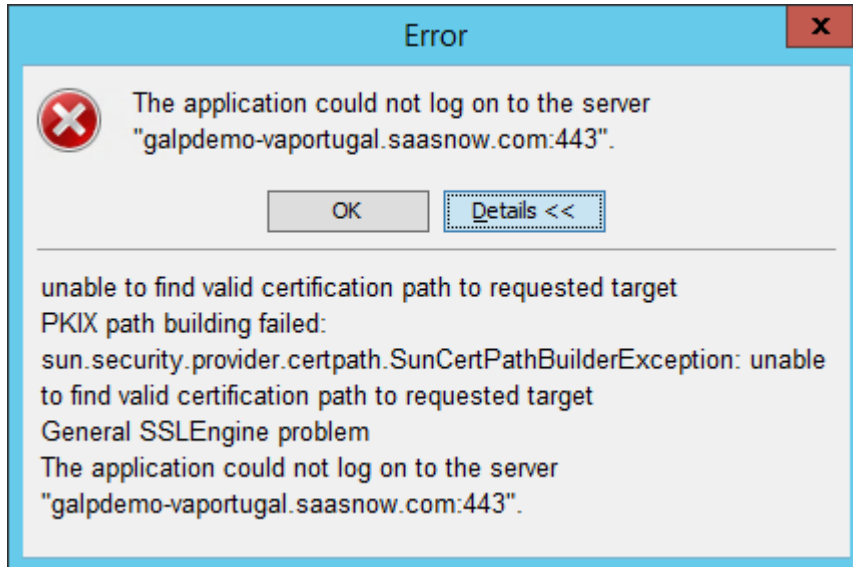
Choose to run the programme and add the credentials. Please choose the name and password you have chosen in the previous step. Please don't forget to add the user.your company@ rds



Then add the target system (the name of your environment).



If this error occurs, then please use http: and port 80.



## Data Upload

Data can be uploaded in multiple formats to a Saasnow environment like xls, csv and sas dataset format.

There are 3 methods available for uploading data:

1. sFTP. A secured method to (automatically) upload data. This can be done scheduled or manually and is a very common method to transfer data. Customers can use their FTP tool of choice (I like WinSCP) to transfer the data. When the destination folder is the autoload folder, content will be loaded automatically into memory, at a certain interval.  
(<https://communities.sas.com/t5/SAS-Communities-Library/Don-t-you-just-love-self-service-auto-load-in-SAS-Visual/ta-p/223530>)
2. Within Saasnow there is a specific browser app, the data manager, that allows end users to drag and drop data set to the server. More or less like the sFTP, but only with human intervention without needing to have an ftp client installed
3. Standard VA functionality. Within VA users can upload local data sets and data set from the server (transferred via 1 and 2) into memory.